

Art. F291BU+D291AU

3/4" Volume control

- For remote installation
- 3/4" NPT inlet and outlet
- Square backplate
- Handle included
- 1/4 turn clockwise
- Sound insulation foam back
- 15.3 GPM @ 60 PSI

To be used with thermostatic valve (#F200BU+#D200AU)

Trim

Finishes:

Chrome 34 02 F291BU

Rough

Finishes:

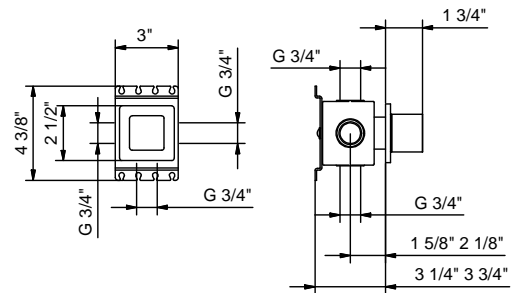
19 00 D291AU

Project:

Room:

Date:

Comments:



Certifications/Awards: