

Art. 7376BU+D276AU

2 way diverter with integrated volume control

- For remote installation
- 1/2" NPT inlets and outlets
- With shut-off valve
- Round backplate
- Handle included
- 8.9 GPM @ 60 PSI (primary outlet)
- 7.6 GPM @ 60 PSI (secondary outlet)

To be used with thermostatic valve (#4711BU+#4711AU or #7300BU+#D200AU)

Trim

Finishes:

- Chrome** 31 02 7376BU
- Matte Gun Metal PVD** 31 P5 7376BU

Rough

Finishes:

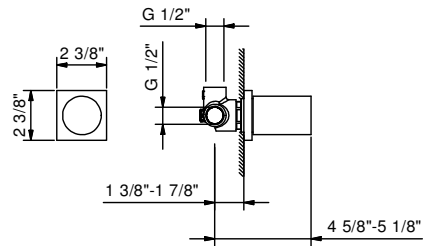
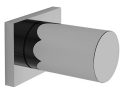
- 19 00 D276AU

Project:

Room:

Date:

Comments:



Certifications/Awards:

