

Art. 2090BU+3970AU

3/4" Volume control

- For remote installation
- 3/4" NPT inlet and outlet
- Sound insulation foam back
- Handle included
- 15.3 GPM @ 60 PSI

To be used with thermostatic valve (#2000BU+#4700AU)

Trim

Finishes:

- Matte White** 51 29 2090BU
- Chrome** 51 02 2090BU
- Matte Black** 51 13 2090BU

Rough

Finishes:

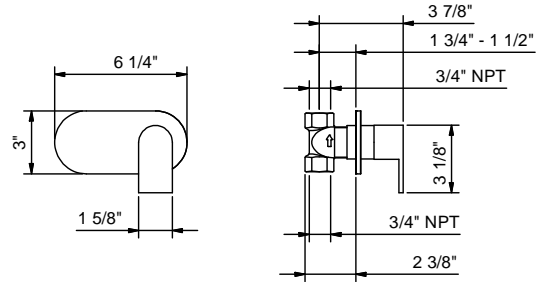
- 19 00 3970AU

Project:

Room:

Date:

Comments:



Certifications/Awards: